

Town of  
**Smithers**



British Columbia, Canada



Investment - Ready  
**Community Profile**



# NORTHERN BC BUSINESS ADVANTAGE

*Northern British Columbia is a strategically located, resource-rich economy with many competitive advantages and incentives for business.*



**British Columbia has one of the most attractive investment climates for business in North America.**

Manufacturers, for example, enjoy benefits such as:

- **Strong economic fundamentals** and market opportunities associated with major, long-term projects
- **Low Tax Rates** (personal and corporate) that rank BC among the lowest in Canada – complemented by sales tax exemptions on machinery and tax credits for research and development expenditures
- **Competitive Operating Costs** including low cost electricity relative to elsewhere in Canada or the US
- **Competitive Wage Rates** reflecting a balanced and growing labour pool
- **Growing Labour Supply** with government initiatives that are driving labour mobility into BC and training our existing workforce assets
- **Welcoming Communities** that keenly encourage new manufacturing and service investments
- **Financial Incentives** for capital investments and job creation in northern BC (up to \$5,000 per new job). *Contact Northern Development Initiative Trust.*

# Welcome to the Town of Smithers



Smithers is a diverse, welcoming mountain community in a spectacular natural setting. Nestled between Hudson Bay Mountain and the Babine Range, our community lies within the traditional territory of the Wet'suwet'en, whose members have lived here for thousands of years.

From large employers in the resources sector to small-scale entrepreneurs and innovative social enterprises, we have created a strong, resilient community economy. Smithers is a regional government centre with access to key provincial ministries. Our airport is close to town, offers daily flights to Vancouver and has been zoned to accommodate industrial development. We are known nationally as a hub for the exploration industry, with a significant cluster of drilling, expediting and related support industries.

Smithers is growing, attracting young families and retirees who are drawn not only to economic opportunities, but also to the abundant amenities of the Bulkley Valley. These include high quality community facilities, great schools, world-class outdoor recreation opportunities, and a vibrant arts and culture scene. We're an active community that cares about the environment and is working to create a sustainable future for our kids and grandkids.

We like to think of Smithers as more than a place to work – it's a place to put down roots, a town with a quality of life that is simply exceptional.

Mayor Taylor Bachrach  
Town of Smithers  
1027 Aldous Street, Box 879  
Smithers, BC Canada, V0J 2N0  
Tel: 250-847-1600  
Fax: 250-847-1601



# CONTENTS

|  |           |
|--|-----------|
| <b>1. Demographics .....</b>                               | <b>6</b>  |
| Population .....   | 6         |
| Household Income .....                                     | 6         |
| Household Income-Distribution .....                        | 6         |
| Workforce Education Attainment .....                       | 7         |
| Language Knowledge .....                                   | 7         |
| <b>2. Labour Force .....</b>                               | <b>8</b>  |
| Employment by Industry .....                               | 8         |
| Top Employers .....  | 9         |
| Average Income By Occupation – Nechako Region .....        | 9         |
| Labour force .....   | 11        |
| Employment Rate .....                                      | 11        |
| Labour Participation Rate .....                            | 11        |
| Commuting .....  | 11        |
| <b>3. Payroll Costs.....</b>                               | <b>12</b> |
| Workers Compensation – 2012 .....                          | 12        |
| Employment Insurance – 2012 .....                          | 12        |
| Social Insurance (Canada Pension Plan) – 2012 .....        | 13        |
| <b>4. Higher Education .....</b>                           | <b>14</b> |
| Four Year Institutions .....                               | 14        |
| Training Services .....                                    | 15        |
| <b>5. Transportation .....</b>                             | <b>16</b> |
| Major Transportation Routes .....                          | 16        |
| Highways .....   | 18        |
| Northern Corridor Specifications .....                     | 19        |
| Railroads .....  | 20        |
| Commercial Airports .....                                  | 21        |
| Ports .....  | 22        |
| Warehouses .....   | 24        |
| Port Shipping Distances .....                              | 25        |
| <b>6. Industrial &amp; Commercial Land Use.....</b>        | <b>26</b> |
| Land Zoned and Designated in Official Community Plan ..... | 26        |
| Local Permit Approvals .....                               | 27        |
| <b>7. Utilities .....</b>                                  | <b>29</b> |

|   |           |
|---|-----------|
| Water System                            | 29        |
| Waste Water System                      | 30        |
| Landfill and Waste Management           | 30        |
| Licensed Hazardous Materials Disposal   | 30        |
| Electric Power                          | 31        |
| Natural Gas                             | 33        |
| Telecommunications                      | 34        |
| <b>8. Business Support Services</b>     | <b>35</b> |
| <b>9. Government</b>                    | <b>36</b> |
| Municipal Government                    | 36        |
| Regional District                       | 36        |
| Provincial                              | 37        |
| Provincial Government Representation    | 37        |
| Federal Government Representation       | 37        |
| <b>10. Housing</b>                      | <b>38</b> |
| Housing Characteristics                 | 38        |
| Average Housing Values                  | 38        |
| <b>11. Taxation</b>                     | <b>39</b> |
| Corporate Income Tax                    | 39        |
| Personal Income Tax                     | 39        |
| Sales / Use Tax                         | 39        |
| Sales Tax Rate by Utility               | 40        |
| Property Tax                            | 41        |
| <b>12. International Resources</b>      | <b>42</b> |
| Investment and Business Support Offices | 42        |
| Financial Institutions                  | 43        |
| Employment Assistance                   | 43        |
| Air Transportation Service              | 44        |
| <b>13. Quality of Life</b>              | <b>45</b> |
| Climate                                 | 45        |
| Culture                                 | 46        |
| Health                                  | 48        |

# 1. DEMOGRAPHICS

## POPULATION

### SMITHERS

| Population By Age Group | Population (2006) | % Distribution |
|-------------------------|-------------------|----------------|
| Under-18                | 2,860             | 27.2%          |
| 18-34                   | 2,010             | 19.1%          |
| 35-54                   | 3,425             | 32.6%          |
| 55-74                   | 1,775             | 16.9%          |
| 75-Older                | 445               | 4.2%           |
| Total:                  | 10,515            | 100%           |
| Median Age:             | 37.6              |                |

### NORTHERN BC

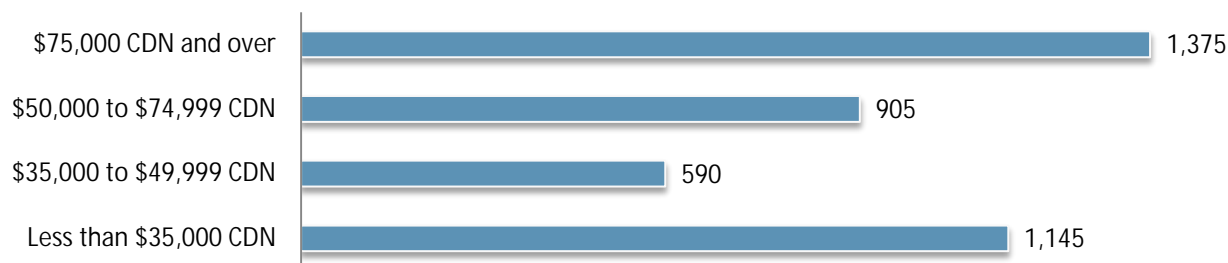
| Population By Age Group | Population (2006) | % Distribution |
|-------------------------|-------------------|----------------|
| 0-4                     | 19,300            | 6%             |
| 5-17                    | 60,400            | 18.8%          |
| 18-24                   | 30,900            | 9.6%           |
| 24-44                   | 88,500            | 27.5%          |
| 45-64                   | 90,700            | 28.2%          |
| 65+                     | 32,200            | 10.0%          |
| Total                   | 322,000           | 100%           |

Data Source: BC Stats - Quarterly Regional Statistics "Cariboo, North Coast, North East, Nechako" - [http://www.bcstats.gov.bc.ca/pubs/pr\\_qrs.asp](http://www.bcstats.gov.bc.ca/pubs/pr_qrs.asp)

## HOUSEHOLD INCOME

| Household Income                       | 2006   |
|--|--------|
| Number of Households                   | 1,385  |
| Median Income - All Families           | 64,124 |
| Median Income - Married Families       | 76,537 |
| Median Income - Common Law Families    | 46,077 |
| Median Income After Tax - All Families | 55,967 |

## HOUSEHOLD INCOME-DISTRIBUTION



Data Source: Invest BC Community Profile - Smithers Area "Demographics"  
<http://investbc.gov.bc.ca/CommunityProfiles/Pages/CommunityInfo.aspx?page=demographic&pCommunityID=509>

## WORKFORCE EDUCATION ATTAINMENT

| Level of Education                            | Number Attained | Distribution |
|---|-----------------|--------------|
| High School Diploma Only                      | 1,900           | 32%          |
| College/University Certificate/Diploma        | 1,235           | 20%          |
| Less than High School Diploma                 | 1,075           | 18%          |
| Apprenticeship/Trades Certificate/Diploma     | 875             | 15%          |
| University Bachelors Degree                   | 630             | 10%          |
| University Graduate Degree/Certificate        | 275             | 5%           |
| University Medical/Dentistry/Optometry Degree | 35              | 1%           |

*Data Source: Invest BC Community Profile - Smithers Area "Labour Quality"*  
<http://investbc.gov.bc.ca/CommunityProfiles/Pages/CommunityInfo.aspx?page=labquality&pCommunityID=509>

## LANGUAGE KNOWLEDGE

| Languages Spoken | Citizens |
|------------------|----------|
| English          | 8,155    |
| French           | 490      |
| Dutch            | 350      |
| German           | 315      |
| Spanish          | 125      |
| Italian          | 70       |
| Vietnamese       | 65       |
| Chinese          | 60       |
| Portuguese       | 55       |
| Japanese         | 40       |



## 2. LABOUR FORCE

### EMPLOYMENT BY INDUSTRY

#### SMITHERS

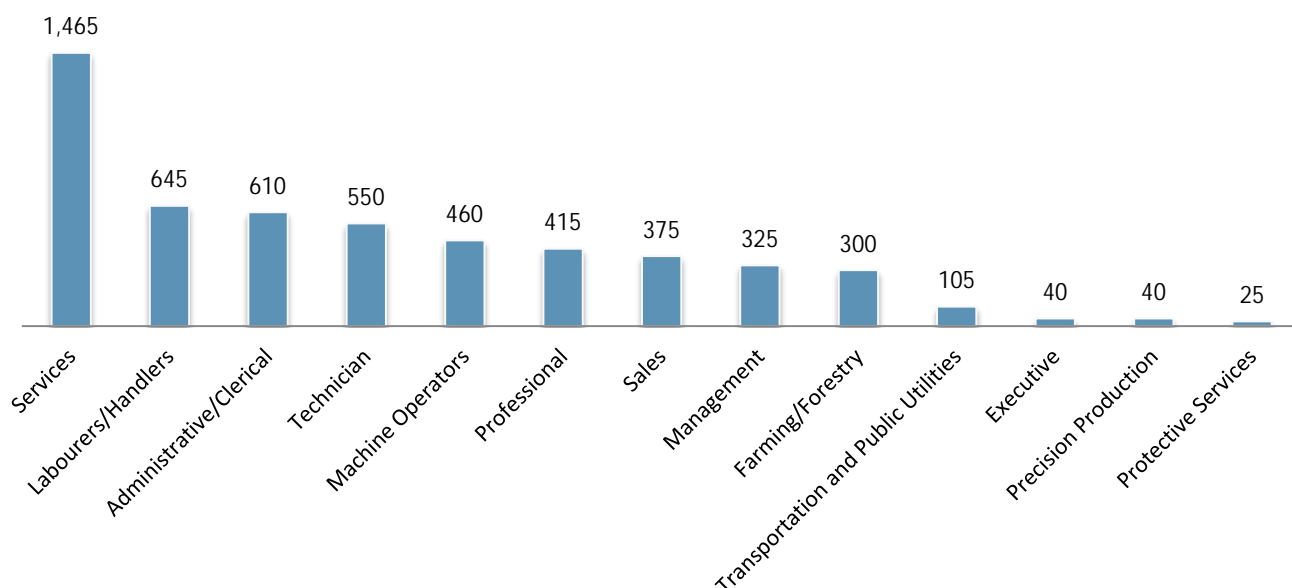
| Sector (Industry)                 |              | %     |
|-----------------------------------|--------------|-------|
| Services                          | 2,150        | 41.03 |
| Retail Trade                      | 620          | 11.83 |
| Manufacturing                     | 450          | 8.59  |
| Transportation & Public Utilities | 410          | 7.82  |
| Government                        | 375          | 7.16  |
| Mining and Oil & Gas              | 325          | 6.20  |
| Construction                      | 270          | 5.15  |
| Finance, Insurance, Real Estate   | 205          | 3.91  |
| Forestry & Logging                | 175          | 3.34  |
| Wholesale Trade                   | 140          | 2.67  |
| <b>Total</b>                      | <b>5,240</b> |       |

#### NORTHERN BC

| Sector (Industry)                |                | %     |
|----------------------------------|----------------|-------|
| Forestry & Logging               | 16,230         | 9.28  |
| Mining and Oil & Gas             | 6,580          | 3.76  |
| Construction                     | 12,385         | 7.08  |
| Manufacturing                    | 21,310         | 12.19 |
| Transportation & Warehousing     | 12,305         | 7.04  |
| Wholesale Trade                  | 5,455          | 3.12  |
| Retail Trade                     | 18,475         | 10.57 |
| Services                         | 32,940         | 18.84 |
| Finance, Insurance & Real Estate | 6,040          | 3.45  |
| Government                       | 43,120         | 24.66 |
| <b>Total</b>                     | <b>174,840</b> |       |

Data Source: Stats Canada 2006 Regional District Profile; Bulkley Nechako, Cariboo, Fraser Fort George, Central Coast, Skeena Queen Charlotte, Kitimat Stikine, Stikine, Northern Rockies, Peace River - <http://www12.statcan.ca/census-recensement/2006/dp-pd/prof/92-591/index.cfm?Lang=E>

### EMPLOYMENT BY OCCUPATION



Data Source: Invest BC Community Profile - Smithers Area "Labour Force"  
<http://investbc.gov.bc.ca/CommunityProfiles/Pages/CommunityInfo.aspx?page=labourforce&pCommunityID=509>

## TOP EMPLOYERS

| Company                            | Product/Service           | # of Employees | Ownership | Website  |
|------------------------------------|---------------------------|----------------|-----------|--|
| All West Glass                     | Glass                     | 300            | Private   | <a href="http://www.all-westglass.com">www.all-westglass.com</a>         |
| Province of BC                     | Government                | 278            | Public    | <a href="http://www.gov.bc.ca">www.gov.bc.ca</a>                         |
| School District No. 54             | Education                 | 270            | Public    | <a href="http://www.sd54.bc.ca">www.sd54.bc.ca</a>                       |
| West Fraser Sawmill                | Dimension Lumber          | 240            | Public    | <a href="http://www.westfraser.com">www.westfraser.com</a>               |
| Hy-Tech Drilling Ltd.              | Drilling                  | 171            | Private   | <a href="http://hy-techdrilling.com">http://hy-techdrilling.com</a>      |
| BV Credit Union                    | Finance                   | 81             | Public    | <a href="http://www.bvcu.com">www.bvcu.com</a>                           |
| Town of Smithers                   | Government                | 65             | Public    | <a href="http://www.smithers.ca">www.smithers.ca</a>                     |
| Hudson Bay Mountain Adventures     | Recreation                | 60             | Private   | <a href="http://www.hudsonbaymountain.com">www.hudsonbaymountain.com</a> |
| Hudson Bay Lodge                   | Tourism and Food Services | 60             | Private   | <a href="http://www.hudsonbaylodge.com">www.hudsonbaylodge.com</a>       |
| Northern Engineering Wood Products | Value Added Lumber        | 50             | Private   | <a href="http://www.newpro.ca">www.newpro.ca</a>                         |
| Office of the Wet'suwet'en         | First Nation Governance   | 37             | Private   | <a href="http://www.wetsuweten.com">www.wetsuweten.com</a>               |
| High Road Services Society         | Social Services           | 33             | Public    | <a href="http://www.highroadservices.org">www.highroadservices.org</a>   |
| Northwest Community College        | Education                 | 32             | Public    | <a href="http://www.nwcc.bc.ca">www.nwcc.bc.ca</a>                       |
| Bandstra Transportation Systems    | Freight Services          | 25             | Private   | <a href="http://www.bandstra.com">www.bandstra.com</a>                   |
| LB Paving                          | Road Paving/Repair        | 25             | Private   |  |
| Smithers Lumber Ltd.               | Lumber & Hardware Retail  | 18             | Private   | <a href="http://www.smitherslumber.com">www.smitherslumber.com</a>       |
| Tricon Truss & Millwork Ltd.       | Truss and Millwork        | 15             | Private   | <a href="http://tricontruss.ca">http://tricontruss.ca</a>                |

*\*Employees outside of Smithers included in total  
Data Source: Town of Smithers – [www.smithers.ca](http://www.smithers.ca)*

## AVERAGE INCOME BY OCCUPATION – NECHAKO REGION

| Occupation                    | Average wage (\$/Hour)(\$CDN) | Effective Date |
|-------------------------------|-------------------------------|----------------|
| Administrative Clerks         | 20.46                         | 2012           |
| Bookkeepers                   | 20.00                         | 2012           |
| Business Development Officers | 28.01                         | 2012           |
| Carpenters                    | 23.00                         | 2012           |

|   |       |      |
|---|-------|------|
| Civil Engineers                                   | 36.06 | 2012 |
| Computer Engineers                                | 36.06 | 2012 |
| Crane Operators                                   | 28.00 | 2012 |
| Drafting Technicians                              | 26.79 | 2012 |
| Electrical Engineers                              | 32.00 | 2012 |
| Forestry Technicians                              | 27.00 | 2012 |
| Geological Engineers                              | 26.73 | 2012 |
| Heavy Duty Equipment                              | 30.00 | 2012 |
| Heavy Equipment Operators                         | 26.75 | 2012 |
| Industrial & Manufacturing Engineers              | 28.08 | 2012 |
| Industrial Electricians                           | 32.00 | 2012 |
| Labourers in Wood, Pulp and Paper Processing      | 20.00 | 2012 |
| Labourers, Processing Manufacturing and Utilities | 18.00 | 2012 |
| Logging Machinery Operators                       | 26.00 | 2012 |
| Machinists  | 25.95 | 2012 |
| Mechanical Engineers                              | 35.00 | 2012 |
| Mine Labourers                                    | 21.42 | 2012 |
| Mining Engineers                                  | 34.23 | 2012 |
| Petroleum Engineers                               | 37.40 | 2012 |
| Primary Production Managers                       | 34.14 | 2012 |
| Purchasing Managers                               | 31.87 | 2012 |
| Sales Representatives                             | 25.00 | 2012 |
| Senior Managers                                   | 32.08 | 2012 |
| Shippers and Receivers                            | 15.00 | 2012 |
| Steamfitters                                      | 27.50 | 2012 |
| Trade Helpers and Labourers                       | 18.00 | 2012 |
| Truck Drivers                                     | 23.00 | 2012 |

§ For a complete list of Wages and Salaries in Northern BC visit the link below

[http://www.workingincanada.gc.ca/LMI\\_report\\_area.do?&area=29305&reportOption=wage](http://www.workingincanada.gc.ca/LMI_report_area.do?&area=29305&reportOption=wage)

## LABOUR FORCE

|                              | Total |
|------------------------------|-------|
| Total Population 15 and over | 3,975 |
| In Labour Force              | 2,830 |
| Employed                     | 2,590 |
| Unemployed                   | 240   |

Data Source: Stats Canada - 2006 Regional District Profile

## EMPLOYMENT RATE

|                      | Percent of Population |
|----------------------|-----------------------|
| Unemployment Rate    | 8.5%                  |
| Labour Participation | 71.2                  |

Data Source: Stats Canada - 2006 Regional District Profile

## LABOUR PARTICIPATION RATE

|        | Labour Participation Rate |
|--------|---------------------------|
| Male   | 79.1%                     |
| Female | 64.4%                     |

Data Source: Stats Canada - 2006 Regional District Profile



## COMMUTING

| Place of Residence | Place of Work | Number of People |
|--------------------|---------------|------------------|
| Smithers           | Telkwa        | 30               |
| Smithers           | Smithers      | 1,940            |
| Smithers           | Houston       | 90               |

Data source: Stats Canada - 2006 Community Profile "Smithers Agglomeration" - <http://www12.statcan.ca/census-recensement/2006/dp-pd/tbt/Rp-eng.cfm?TABID=1&LANG=E&A=R&APATH=3&DETAIL=0&DIM=0&FL=A&FREE=0&GC=0&GID=5951043&GK=0&GRP=1&O=D&PID=90656&PRID=0&PTYPE=88971.97154&S=0&SHOWALL=0&SUB=0&Temporal=2006&THEME=76&VID=0&VNAMEF=&VNAMEF=>

### 3. PAYROLL COSTS

#### WORKERS COMPENSATION – 2012

|  |              | Notes   |
|--|--------------|---|
| Average Cost of All Manufacturing<br>Per \$100 Payroll | \$1.54 CDN   | Rates set by employer's business activity. Applies up to maximum gross earnings of \$73,700(CDN) per year.  |
| Average Rate for Office Workers<br>Per \$100 Payroll   | \$0.30 CDN   | There is no separate rating for office occupations in BC- the applicable industry rating applies to all workers. Rates for Business Services range from \$0.09-\$0.30 per \$100 of payroll. Average of \$0.30(CDN). |
| Maximum Weekly Benefit (Net)                           | \$974.21 CDN | Maximum per employee set at 90% of average net earnings (after deductions for income taxes, Canada Pension Plan & Employment Insurance), up to maximum wage of \$73,700 per year(CDN).                              |

#### EMPLOYMENT INSURANCE – 2012

|                                    |              | Notes   |
|------------------------------------|--------------|---|
| Taxable Base                       |              | Based on gross payroll up to a gross per worker salary of \$45,900 per year(CDN). |
| Percentage Rate (Employer Premium) |              |   |
| § Employee Rate                    | 1.83%        | Maximum annual contribution per worker is \$839.97(CDN).                          |
| § Employer Rate                    | 2.56%        | Maximum annual contribution per worker is \$1,176.00(CDN).                        |
| § Maximum Weekly Benefits          | \$485.00 CDN |   |



## SOCIAL INSURANCE (CANADA PENSION PLAN) – 2012

|   |                              | Notes   |
|---|------------------------------|---|
| Taxable Base                                      | Gross Payroll<br>\$3,500 CDN | Based on annual gross salary up to \$50,100.00, basic exemption of \$3,500. Both employers and employees are required to contribute to the Canada Pension Plan. |
| Employee/Employer Contribution                    | 4.95%                        | Employer premium equal to employee premium  |
| Maximum Annual Employer Contribution Per Employee | \$2306.70 CDN                | Employer contribution matches employee contribution.  |
| Rate  | 4.95%                        |   |
| Maximum Annual Self Employed Contribution         | \$4,613.40 CDN               |   |

Data Source TaxTips.Ca - <http://www.taxtips.ca/cppandei.htm>

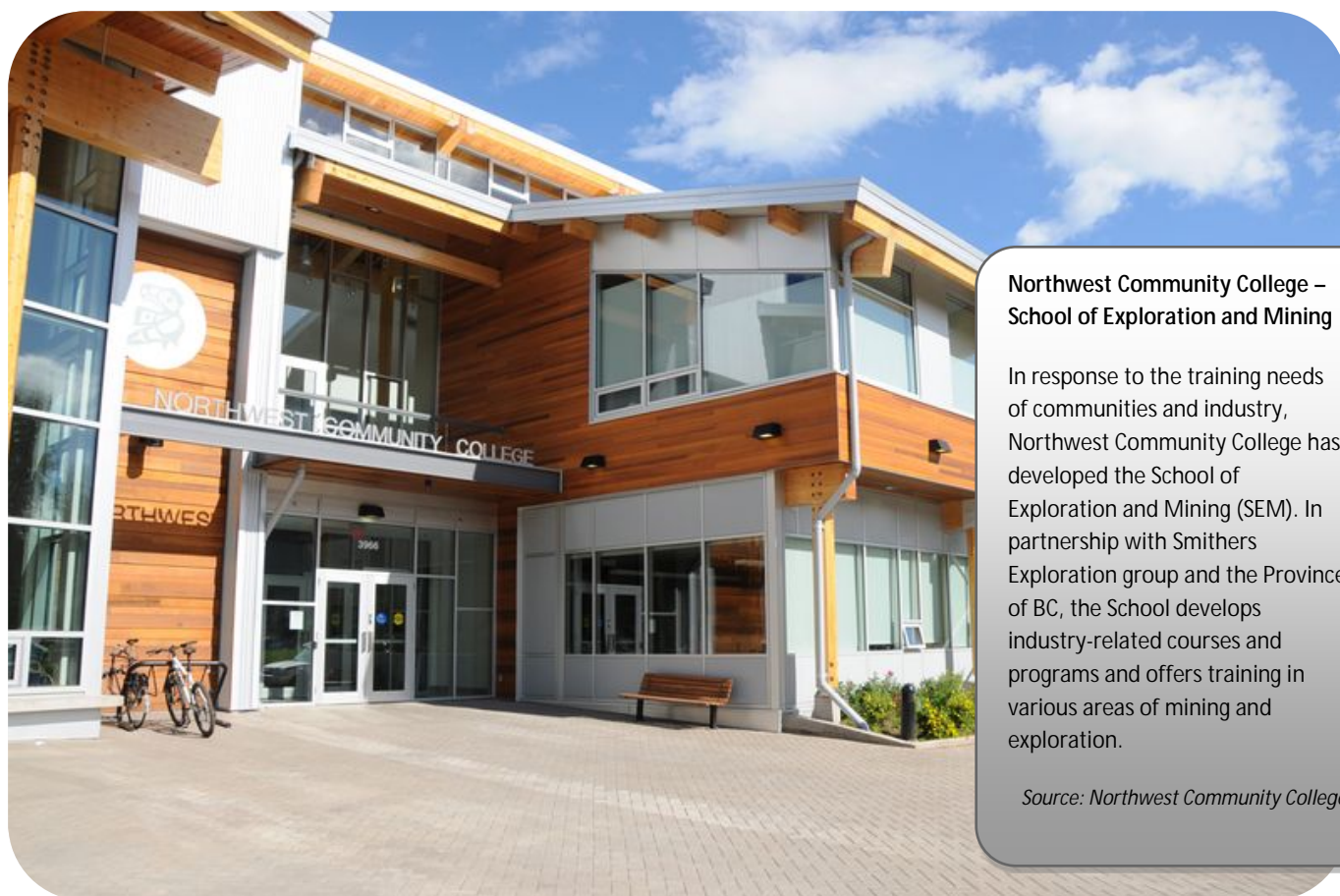
Data Source: WorkSafeBC - [www.worksafefbc.com](http://www.worksafefbc.com)



## 4. HIGHER EDUCATION

### FOUR YEAR INSTITUTIONS

|                                 |   |
|---------------------------------|---|
| Institution                     | Northwest Community College   |
| Campus/Address                  | Smithers Campus<br>2965 Tatlow Road<br>Smithers, BC<br>VOJ 2N0<br>Tel: 250-847-4461<br>Toll Free: 877- 277-2288 |
| Other Campuses                  | Terrace (Main Campus), Hazelton, Houston, Kitimat, New Aiyansh, Prince Rupert, Queen Charlotte City, Stewart    |
| Website                         | <a href="http://www.nwcc.bc.ca">www.nwcc.bc.ca</a>  |
| Driving Distance from Community | Campus located in Smithers  |
| Enrolment (2010/11):            |   |
| Total                           | 650   |
| Full-Time                       | 158   |



#### Northwest Community College – School of Exploration and Mining

In response to the training needs of communities and industry, Northwest Community College has developed the School of Exploration and Mining (SEM). In partnership with Smithers Exploration group and the Province of BC, the School develops industry-related courses and programs and offers training in various areas of mining and exploration.

*Source: Northwest Community College*

|  |  |
|--|--|
| <b>Institution</b>                     | <b>University of Northern British Columbia</b>                       |
| <b>Campus/Address</b>                  | UNBC Campus Northwest<br>4837 Keith Avenue<br>Terrace, BC<br>V8G 1K7 |
| <b>Other Campuses</b>                  | Prince George (main), Fort St. John, Quesnel, Terrace                |
| <b>Website</b>                         | <a href="http://www.unbc.ca">www.unbc.ca</a>                         |
| <b>Driving Distance from Community</b> | Campus in Terrace (205 km)   |
| <b>Enrolment (2010/11)</b>             | 4,266  |

## TRAINING SERVICES

| <b>Institution</b>                 | <b>Address</b>                        | <b>Phone</b>  |
|------------------------------------|---------------------------------------|---------------|
| <b>Northwest Community College</b> | 3966 2nd Avenue, Smithers, BC V0J 2N0 | 250- 847-4461 |
| <b>Community Living BC</b>         | 3793 Alfred Avenue, BC V0J 2N0        | 250- 847-7780 |



## 5. TRANSPORTATION

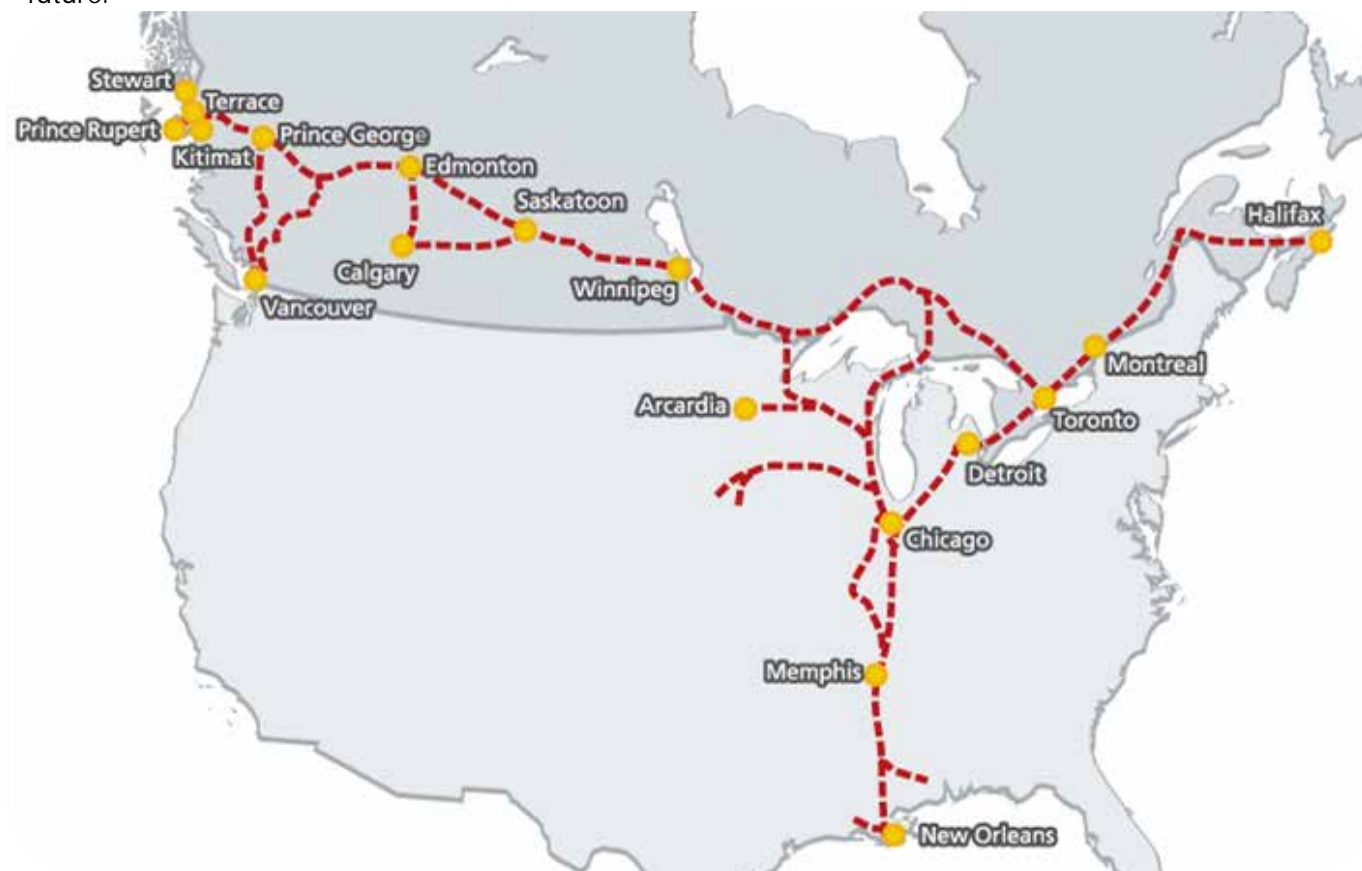
### MAJOR TRANSPORTATION ROUTES

#### PACIFIC GATEWAY

British Columbia's ports in Vancouver, Kitimat, Stewart and Prince Rupert are Asia's closest ports of entry on the west coast of North America, up to 58 hours closer than the ports of Los Angeles and Long Beach.

Canadian ports and airports are seamlessly integrated with road and rail connections to all major U.S. economic centers. British Columbia is the only gateway on the west coast of the Americas served by three transcontinental railways. Today, Canada's Pacific Gateway is an integrated, secure, reliable transportation network that includes world-class airports, seaports, railways, roadways and border crossings, bringing Canada and the North American market to Asia and the world. Canada's Pacific Gateway, through British Columbia's ports in Vancouver, Kitimat, Stewart and Prince Rupert, offers Asian shippers the most direct route between Asia and North America.

Canada's Pacific Gateway is a strong commitment by government and industry partners to make British Columbia's ports the preferred gateway for Asia-Pacific trade, with the most competitive port system and supply chain on the west coast of the Americas. This commitment builds on Canada's longstanding and strong cultural and economic ties with Asia. In the emerging new global economy, Canada's Pacific Gateway is a gateway to the future.



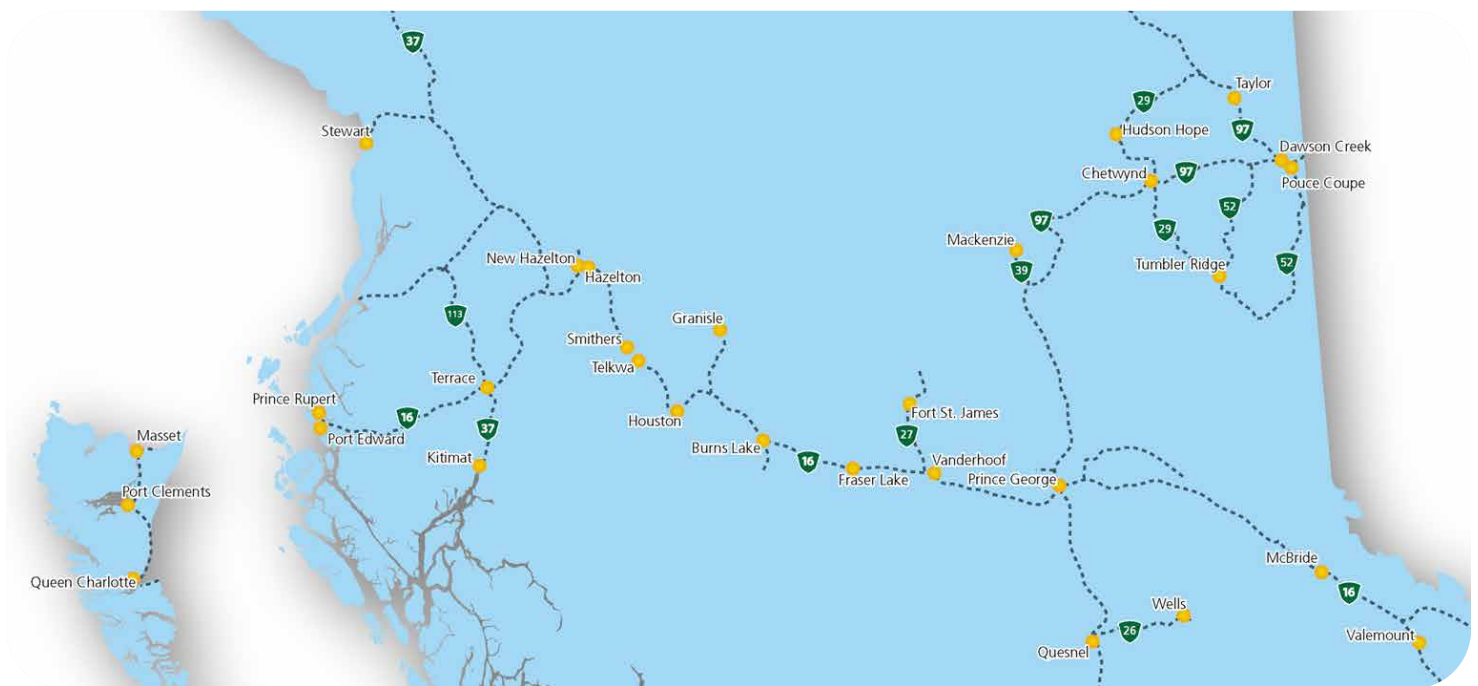
## NORTHERN CORRIDOR

The Northern Corridor spans over half of continental Canada and reaches well into the heartland of North America south of Chicago, USA. It travels through the lowest elevations of the Americas great continental divide, also known as the “Yellow Head Pass,” and forms the straightest, shortest, flattest route for Asian-North American trade. Three Northern British Columbia ports provide efficient access to this corridor; Kitimat, Stewart and Prince Rupert. Each port offers unique advantages and services that meet the needs of the region and international trade.

Trans-continental rail, Trans Canada Highway and direct air service into international Air Hubs are in place. The corridor services business covered by the North American Free Trade Agreement, through a variety of break bulk and container services in ports operated by governments and those run by private port interests.

The Northern Corridor is less impeded by road closures, significant weather patterns and avalanches than the Southern Canadian corridor. It provides “one less day” shipping advantage to or from Asia compared to all other North American Port locations including Vancouver and all USA pacific Ports.

Canadian National Rail (CN Rail) reaches well into the heartland of America with shipping agreements in place with major US rail carriers. CN has made significant investments in the Northern Corridor rail line including extended sidings, upgrades to signal systems, increased bridge and tunnel clearances. The corridor is serviced by five international airports and four northern airports with Prince George offering international services. The largest passenger service airport west of Prince George and north of British Columbia’s Okanagan region is the Terrace-Kitimat Northwest Regional airport.



## HIGHWAYS



## NORTHERN CORRIDOR SPECIFICATIONS

| Commercial Vehicle Without Permit | Specifications |
|-----------------------------------|----------------|
| Maximum Width                     | 2.59 meters    |
| Maximum Height                    | 4.15 meters    |
| Maximum Vehicle Weights           |                |
| Super B                           | 63,500 kgs     |
| Single Axel                       | 9,100 kgs      |
| Tandem Axle (set)                 | 17,000 kgs     |
| Tridem Axle (set)                 | 24,000 kgs     |

| Commercial Vehicle With Permit | Specifications |
|--------------------------------|----------------|
| Maximum Width                  | 4.4 meters     |
| Maximum Height                 | 4.72 meters    |
| Maximum Vehicle Weights        |                |
| Super B                        | 64,000 kgs     |
| Single Axel                    | 9,100 kgs      |
| Tandem Axle (set)              | 23,000 kgs     |
| Tridem Axle (set)              | 29,000 kgs     |

## OVERHEAD CLEARANCE

| Yellowhead Highway 16 from BC Border to Prince Rupert | Clearance (meters) |
|---|--------------------|
| § Khyex River Bridge                                  | 5.95m              |
| § Kitsequcla Overpass                                 | 5.7m               |
| § Tete Jaune underpass                                | 4.96m              |
| <b>Highway 37 from Hwy 16 North to Yukon Border</b>   |                    |
| § Irving River Bridge #2                              | 5.74m              |
| § Devil Creek Bridge                                  | 5.74m              |
| <b>Highway 37 from Hwy 16 South to Kitimat</b>        |                    |
| § Williams Creek Bridge                               | 4.97m              |
| § Hirsch Creek Bridge                                 | 4.72m              |
| § Kitimat River Bridge                                | 5.08m              |
| <b>Highway 37A from Hwy 37 To Stewart</b>             |                    |
| § No Clearances                                       |                    |

## PROVINCIAL PERMIT CENTRE

For more information on receiving a commercial vehicle permit please contact **1-800-559-9688**. The core hours of service are from 5am to 10pm, seven days a week and most statutory holidays. The 1-800 number is available to callers anywhere in Canada or the United States. Permits available through this line include:

- § non-resident commercial vehicle permits
- § term oversize and overweight permits
- § single trip oversize and overweight permits
- § motor fuel tax permits
- § highway crossing permits
- § extra-provincial temporary operating permits

## HIGHWAY DISTANCES

| Metro Area    | Distance |
|---------------|----------|
| Prince George | 371 km   |
| Kamloops      | 891 km   |
| Edmonton      | 1,110 km |
| Vancouver     | 1,150 km |
| Calgary       | 1,155 km |
| Victoria      | 1,231 km |
| Seattle       | 1,266 km |
| Portland      | 1,545 km |

## RAILROADS

|                                     |   |
|-------------------------------------|---|
| CN Rail                             | <a href="http://www.cn.ca">www.cn.ca</a>          |
| Main or Branch Line:                | Branch & Main                                     |
| Shortline or National:              | International                                     |
| Distance to Nearest Switching Yard: | Located in community                              |
| Capability                          | Cargo- Bulk, Container, Liquid, Multi Commodities |

|                                     |  |
|-------------------------------------|--|
| VIA Rail                            | <a href="http://www.viarail.ca">www.viarail.ca</a> |
| Main or Branch Line:                | Branch & Main                                      |
| Shortline or National:              | International                                      |
| Distance to Nearest Switching Yard: | Located in community                               |
| Capabilities                        | Passenger  |

Data Source: Invest BC Community Profile - Smithers Area "Transportation"



## COMMERCIAL AIRPORTS

| Smithers Regional Airports                        | Weekly Flights to Greater Vancouver                     |
|---|---|
| Hub Status  | Commercial  |
| Distance From Community                           | Located in Smithers                                     |
| Hours of Operation                                | 6:30 am - 8:30 pm                                       |
| Approved Capital Expansion                        | No  |
| Customs Point of Entry                            | No  |
| Foreign Trade Zone                                | No  |
| Full Instrumentation                              | n/a   |
| No. of Runways                                    | 1   |
| Runway Length                                     | 2,286 m   |
| No. of Days Closed From Bad Weather in last 3 yrs | n/a   |
| Weekly Non-Stop Flights                           | 44  |
| Flights to Largest Cities Served                  | 16  |
| Greater Vancouver                                 | 16  |
| Carriers  | Air Canada Jazz , Central Mountain Air, Hawkair, NT air |

Data Source: Town of Smithers – [www.smithers.ca](http://www.smithers.ca)

Data Source: Invest BC Community Profile - Terrace Area "Transportation"

<http://investbc.gov.bc.ca/CommunityProfiles/Pages/CommunityInfo.aspx?page=transportation&pCommunityID=484>



## PORTS

### PORT OF PRINCE RUPERT

|                                   |   |
|-----------------------------------|---|
| Port of Prince Rupert             | <a href="http://www.rupertport.com">www.rupertport.com</a>  |
| Distance from Community           | 347 km  |
| Location of Port                  | Prince Rupert   |
| Terminals                         | Fairview (Container) Terminal, Ridley Terminals, (coal, wood pellets), Prince Rupert Grain, Northland Cruise Terminal   |
| Type of Port                      | Ocean   |
| Channel Depth                     | 35-55 meters  |
| Shallow Water Barging Facilities  | Yes   |
| Deep Water Barging Facilities     | Yes   |
| General Cargo Facilities          | Yes   |
| Containerized Facilities          | Yes   |
| Refrigerated Container Facilities | Yes   |
| Cruise Ship Facilities            | Yes   |
| Storage Facilities                | Yes   |
| Highway Serving Port              | #16   |
| Railway Serving Port              | CN Rail   |
| Types of Services:                | Bulk / break-bulk: Coal, Petroleum Coke, Wood Pellets, Grain, Logs,   |
| Imports                           | Retail (including electronics, apparel, furniture, auto parts); petroleum products; industrial inputs (tiles, glass)  |
| Exports                           | Midwest – specialty crops; scrap metal, recycled paper<br>British Columbia – Forest products (lumber, pulp, logs); aluminum, seafood  |
| Shipping Lines                    | Cosco, Hanjin, Yang Ming, K-Line, Quickload Transloading Services, Shipping Agents, GW Nickerson Co., Northcoast Shipping, Rupert Marine Shipping, Tidal Transport & Trading Ltd. |



## PORT OF KITIMAT

|                                  |  |
|----------------------------------|--|
| Private Port of Kitimat          | <a href="http://www.kitimat.ca/EN/main/business/invest-in-kitimat/port-of-kitimat.html">www.kitimat.ca/EN/main/business/invest-in-kitimat/port-of-kitimat.html</a> |
| Distance from Community          | 261 km   |
| Location of Port                 | Kitimat  |
| Terminals                        | Rio Tinto Alcan - Break Bulk Terminal<br>Methanex Petrochemical Terminal<br>Eurocan Breakbulk Terminal   |
| Type of Port                     | Deep Sea   |
| Channel Depth                    | 45- 200 fathoms, 18-185 Meters (59-607 Feet)   |
| Turning Basin                    | 1.1 - 2.2 nautical miles   |
| Shallow Water Barging Facilities | Yes  |
| Deep Water Barging Facilities    | Yes  |
| General Cargo Facilities         | Yes  |
| Containerized Facilities         | No   |
| Storage Facilities               | Yes  |
| Highway Serving Port             | Highway # 16 via #37   |
| Railway Serving Port             | CN Rail  |
| Types of Services                | Bulk/ Break-bulk, Methanol, Amonia condensate, Pitch, Alumina ,Bauxite condensate  |
| Imports                          | Pitch, Alumina, Bauxite Condensate, Methanol   |
| Exports                          | Kraft Paper, Aluminum Sheetting  |
| Shipping Lines                   | Waterfront Shipping, Gearbulk  |
| Shipping Agents                  | GW Nickerson Co., TNC Canada   |
| Customs Brokers                  | GW Nickerson Co., Moore E T S Services   |
| Tug & Barge                      | SMIT Marine, Seaspace International  |



## CUSTOM POINT OF ENTRY

|                                 |   |
|---------------------------------|---|
| Canadian Border Services Agency | Kitimat   |
| Type of Entry Point             | Port  |
| Location                        | 309-450 City Centre<br>Kitimat, BC,<br>Canada V8C 1T6<br>Tel: 250- 627-3003 |

|                                 |   |
|---------------------------------|---|
| Canadian Border Services Agency | Prince Rupert   |
| Type of Entry Point             | Port  |
| Location                        | 368-309 2nd Ave West<br>Prince Rupert, BC,<br>Canada V8J 3T1<br>Tel: 250-627-3003 |

## WAREHOUSES

|                          |   |
|--------------------------|---|
| No. of Bonded Warehouses | 0 |
| No. of Public Warehouses | 2 |

Data Source: City of Prince Rupert - [www.princerupert.ca](http://www.princerupert.ca)

Data Source: Invest BC Community Profile-Smithers Area "Transportation"

<http://investbc.gov.bc.ca/CommunityProfiles/Pages/CommunityInfo.aspx?page=transportation&pCommunityID=509>



## PORT SHIPPING DISTANCES

The NW Transportation and Trade Corridor ports (Kitimat and Prince Rupert, Stewart) are between 1 and 1 1/2 day closer to general Asia Pacific markets than the Ports in British Columbia's lower mainland; and the Vancouver Ports. The Southern Ports are closer to the Panama Canal and subsequently, the Atlantic. The following table is in nautical miles. The Time/Speed/Distance Calculations are at 16.1439 Kn/Hr., the average speed The Port of Vancouver uses for calculating their shipping to Yokohama, Hong Kong, Kaohsiung (Taiwan) and Xingang (China). Deep-sea vessels travel at various speeds between 14Kn/Hr and 20Kn/Hr. The 'great circle shipping route' to Asia from North America has well documented ocean currents and weather/wind patterns which allows for accurate estimates.

|                           | Kitimat              | Prince Rupert         | Stewart               | Vancouver          | Los Angeles          | Yokohama<br>(Japan)   | Hong Kong             | Kaohsiung<br>Kang(Taiwan) | Xingang (China)       |
|---------------------------|----------------------|-----------------------|-----------------------|--------------------|----------------------|-----------------------|-----------------------|---------------------------|-----------------------|
| <b>Kitimat</b>            | –<br>7.5 Hrs.        | 121 NM<br>7.5 Hrs.    | 264 NM<br>17 Hrs.     | 400 NM<br>1 Day    | 1,391 NM<br>3.5 days | 3,941 NM<br>10 Days   | 5,444 NM<br>14 Days   | 6,187 NM<br>16 Days       | 6,187 NM<br>16 Days   |
| <b>Prince Rupert</b>      | 121 NM<br>7.5 Hrs.   | –                     | 123 NM<br>10 Hrs.     | 477NM<br>1.2 Days  | 1,432NM<br>3.6 Days  | 3,810NM<br>9.8 Days   | 5,323NM<br>13.7 Days  | 6,110NM<br>15.7 Days      | 6,110NM<br>15.7 Days  |
| <b>Stewart</b>            | 264 NM<br>17 Hrs.    | 123 NM<br>10 Hrs.     | –                     | 573 NM<br>1.5 Days | 1,529 NM<br>4 Days   | 3,896 NM<br>10.3 Days | 5,406 NM<br>14.1 Days | 5,155 NM<br>13.4 Days     | 4,749 NM<br>12.5 Days |
| <b>Vancouver</b>          | 400 NM<br>10 Day     | 477 NM<br>1.2 Days    | 573 NM<br>1.5 Days    | –                  | 991NM<br>2.5 Days    | 4,262NM<br>11 Days    | 5,763NM<br>15 Days    | 6,587NM<br>17 Days        | 7,578NM<br>20 Days    |
| <b>Los Angeles</b>        | 1,391 NM<br>3.5 Days | 1,432 NM<br>3.6 Days  | 1,529 NM<br>4 Days    | 991NM<br>2.5 Days  | –                    | 4,839NM<br>12.5 Days  | 6,380NM<br>18 Days    | 7,578NM<br>20 Days        | 8,959NM<br>23 Days    |
| <b>Yokohama</b>           | 3,941 NM<br>10 Days  | 3,810 NM<br>9.8 Days  | 3,896 NM<br>10.3 Days | 4,262NM<br>11 Days | 4,839NM<br>12.5 Days | –                     | 1,585NM<br>4 Days     | 1,335NM<br>3.4 Days       | 1,335NM<br>3.4 Days   |
| <b>Hong Kong</b>          | 5,444 NM<br>14 Days  | 5,323 NM<br>13.7 Days | 5,406 NM<br>14.1 Days | 5,763NM<br>15 Days | 6,380NM<br>18 Days   | 1,585NM<br>4 Days     | –                     | 290NM<br>18 Hrs.          | 2,90NM<br>18 Hrs.     |
| <b>Kaohsiung<br/>Kang</b> | 6,187 NM<br>16 Days  | 6,587 NM<br>17 Days   | 5,155 NM<br>13.4 Days | 6,587NM<br>17 Days | 7,578NM<br>20 Days   | 1,335NM<br>3.4 Days   | 290NM<br>18 Hrs.      | –                         | 227NM<br>14 Hrs.      |
| <b>Xingang</b>            | 6,187 NM<br>16 Days  | 6,587 NM<br>17 Days   | 4,749 NM<br>12.5 Days | 7,578NM<br>20 Days | 8,959NM<br>23 Days   | 1,335NM<br>3.4 Days   | 290NM<br>18 Hrs.      | 227NM<br>14 Hrs.          | –                     |

Source: United States Government. "Distances Between Ports" Prepared and published by the National Imagery and Mapping Agency, Bethesda, Maryland. Ninth Edition 1997. \*Time/Speed/Distance Calculations at 16.1439 Kn/Hr., the average speed Vancouver Port lists to reach Yokohama, Hong Kong, Kaohsiung (Taiwan) and Xingang (China)

6. INDUSTRIAL & COMMERCIAL LAND USE

LAND ZONED AND DESIGNATED IN OFFICIAL COMMUNITY PLAN

|                 | Industrial Land | Commercial Land | Mixed Use |
|-----------------|-----------------|-----------------|-----------|
| Total           | 845 ac          | 61 ac           | 53 ac     |
| Acres Developed | 834 ac          | 26 ac           | 48 ac     |
| Acres Vacant    | 10 ac           | 35 ac           | 5 ac      |

|                                    |                |
|------------------------------------|----------------|
| Industrial Parks                   | 1              |
| Total Acres                        | 2              |
| Number of Acres in Use             | 2              |
| Number of Acres Vacant             | 0              |
| Number of Acres Fully Serviced     | 0              |
| Number of Acres Partially Serviced | 2 (Water Only) |
| Number of Acres Not Serviced       | 0              |

Data source: Town of Smithers – [www.smithers.ca](http://www.smithers.ca)



## LOCAL PERMIT APPROVALS

| Type of Permit          | Average Time for Approval | Associated Fees                              |
|-------------------------|---------------------------|--|
| Building Permit         | 1-2 Weeks                 | \$6.25 per \$1000 dollars of structure value |
| Business License        | 1 Week                    | \$160-\$660/year                             |
| Development Permit      | 1 Month                   | \$400  |
| Occupancy Permit        | 1-2 Weeks                 | -  |
| Plan Amendment          | 3-4 Months                | \$1,200                                      |
| Re-Zoning Application   | 3-4 Months                | \$1,000                                      |
| Subdivision Application | 1 Month                   | \$300  |

Data source: Town of Smithers – [www.smithers.ca](http://www.smithers.ca)

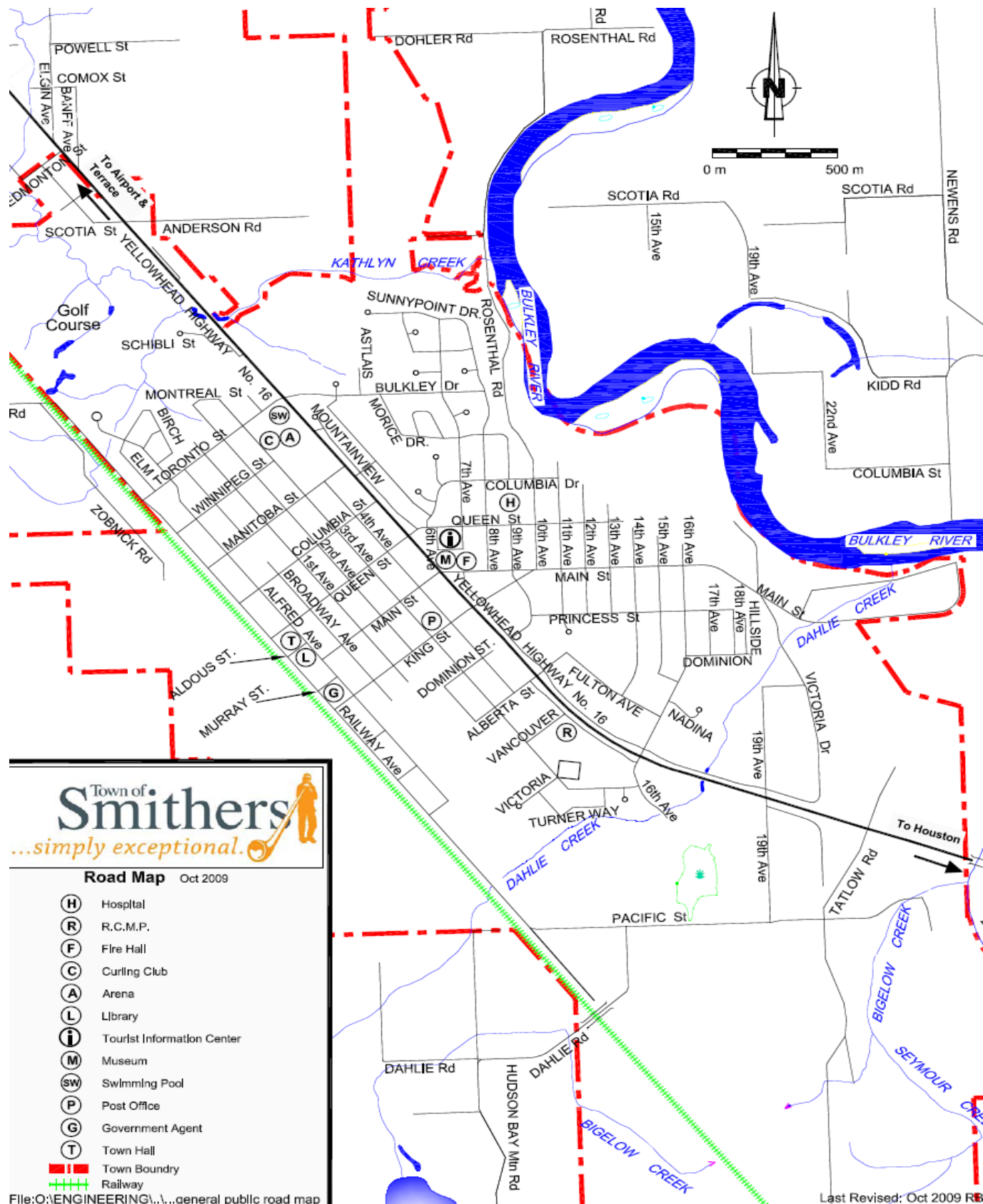
## ACQUISITION OF CROWN LAND

- § Crown land is land that is owned by the Province of British Columbia. The Province is the steward of the land and can lease, license and sell Crown land for a variety of purposes including residential, commercial, industrial, agricultural, tourism and recreational purposes.

| Company                                   | Contact  | Notes   |
|---|--|---|
| Integrated Land Management Bureau         | <a href="mailto:FrontCounterBC@gov.bc.ca">FrontCounterBC@gov.bc.ca</a> | Develops Crown land parcels with values up to \$2.5 million   |
| Ministry of Tourism, Culture and the Arts | Tel: 250- 371-3952   | Handles land sales related to resort development, under the All Seasons Resort Policy.  |
| Ministry of Transportation                | Tel: 250-387-3198  | Handles land sales related to public airports and port authorities and the marketing of Crown land is done through MLS Realtors |

- § To view properties that the Federal Government of Canada has for sale, please visit: <http://reo.pwgsc.gc.ca/public/>

# SMITHERS – ROAD MAP



# 7. UTILITIES

## WATER SYSTEM

Water supply for the majority of Town of Smithers’s residents is sourced from three deep wells on the southeast side of Town. The combined rated yield of the three wells is 12 ML/day. The water quality sourced is very good and is only treated approximately one month of the year with sodium hypochlorite during the Town’s annual water main flushing operations. The town currently does not fluoridate its water. The wells feed into a single pressure zone distribution grid which includes two water storage reservoirs capable of holding 5.5 ML. The Smithers Airport is supplied by a separate water system from the Town. It consists of one deep well with a rate yield of 0.22 ML/day, 0.65 ML in three underground storage cisterns, two small distribution pumps and a fire pump. The airport system also services a 29 lot subdivision on Lake Kathlyn and an elementary school.

The Works and Operations Department of the Town of Smithers is responsible for the operation of the water supply and distribution systems. For further information on the Town of Smithers water system contact the Works and Operations Department at 250-847-1600.

## WATER PRODUCTION

| Name of Provider                             | Township of Smithers    |
|--|-------------------------|
| Rated Capacity                               | 2.7 (mgd)               |
| Average Daily Demand                         | 0.73 (mgd)              |
| Peak Demand                                  | 1.5 (mgd)               |
| Residential Cost (flat rate)                 | Annual fee - \$170      |
| Commercial & Industrial Cost / 1,000 Gallons | \$2.38                  |
| Water Connection Fee: Industrial             | Actual costs            |
| Water Connection Fee: Residential            | \$1,500 or actual costs |

Data source: Town of Smithers – [www.smithers.ca](http://www.smithers.ca)



## WASTE WATER SYSTEM

Waste water within the Town of Smithers is collected via approximately 38 kms of underground sewer lines. The sewage collection is primarily gravity, with the exception of three small lift stations. The sewage collection system terminates at a two cell aerated lagoon facility including pre-screening and an outfall into the Bulkley River. The Original plant was constructed in 1972 as an activated sludge treatment plant, and replaced with aerated lagoons in 1983.

The Works and Operation Department of the Town of Smithers is responsible for the operation of the waste water collection and treatment systems. For further information on the Town of Smithers waste water system contact the Works and Operations Department at 250- 847-1600

## SEWAGE SERVICE

|   |                                |
|---|--------------------------------|
| Name of Provider                          | Smithers Sewer Treatment Plant |
| Rated Capacity                            | 2.2 (mgd)                      |
| Average Daily Demand                      | 0.57 (mgd)                     |
| Peak Demand                               | 1.43 (mgd)                     |
| Cost per 1000 Gallons- Industrial         | Dependent on industry          |
| Sewer Connection fee for Industrial Users | Cost of Installation           |

Data source: Town of Smithers – [www.smithers.ca](http://www.smithers.ca)

## LANDFILL AND WASTE MANAGEMENT

|                               |  |
|-------------------------------|--|
| Landfill Name                 | Knockholt Regional Landfill                    |
| Location                      | 8072 Aitken Road, 81 km east of Smithers       |
| Capacity Left at Current Site | 64 years                                       |
| Plans for New Capacity        | Current plans will add an additional 3-5 years |

## LICENSED HAZARDOUS MATERIALS DISPOSAL

|  |  |
|--|--|
| Name of Site   | None Located Directly Within The Community |
| No. of Licensed Hazardous Waste Haulers Serving the Area | 4  |

Data Source: Invest BC Community Profile – Smithers Area - "Utilities"  
<http://investbc.gov.bc.ca/CommunityProfiles/Pages/CommunityInfo.aspx?page=utilities&pCommunityID=509>

## ELECTRIC POWER

|  |   |
|--|---|
| Provider: BC Hydro                                       | <a href="http://www.bchydro.com">www.bchydro.com</a>  |
| Enquiries to hook up new property                        | 1-877-520-1355  |
| Enquiries about existing properties already hooked up    | 1-800-224-9376  |
| Net Importer/Exporter of Power:                          | Net Exporter – BC Hydro generates between 43,000 and 54,000 GWH of electricity annually.  |
| % of Reserve Margin Including Generation & Net Purchases | 8% as per WSCC guidelines plus an additional 8% surplus   |
| Average Electrical Service Availability Index            |   |
| § Most Recent Year                                       | 99.940  |
| § Last 5 Years   | 99.9314   |
| Name of Power Pool Membership                            | Formal membership in WSCC, WSPP, Power Pool of Alberta (PPA), MAPP. Also active in SPP and CalPX  |
| Source Electric Power Deregulated                        | Wholesale competition allowed   |
| Residential Customers                                    | 6.80 cents per kWh for the first 1,350 kWh they use over a two-month billing period. Above that amount, customers pay 10.19 cents per kWh for the balance of the electricity used during the billing period.  |
| Business Customers                                       | Average Cost Per kWh  |
| Small General Service Rate                               | <i>Annual peak demand less than 35kW</i>  |
| § Basic Charge   | 19.25 cents per day   |
| § All kWh  | \$0.0915 per kWh  |
| § Minimum Charge   | The Basic Charge  |
| § Rate Rider   | 5% Rate Rider applied to all charges, before taxes and levies.  |
| Medium General Service Conservation Rate                 | <i>Annual peak demand between 85 and 150 kW</i>   |
| § Basic Charge   | 19.25 cents per day   |
| § Demand Charge  | \$0.00 per kW for first 35 kW<br>\$4.69 per kW for next 115 kW<br>\$9.00 per kW for remaining kW  |
| § Energy Charge  | Part 1:<br>First 14,800 kWh \$0.0897 per kWh All additional kWh \$0.0490 per kWh up to baseline<br>Part 2:<br>\$0.0942 per kWh for usage up to 20% above baseline<br>\$0.0942 per kWh for savings down to 20% below baseline (credit)<br>Usage or savings beyond 20% of baseline are based on Part 1 prices |

|   |  |
|---|--|
| § Discounts   | 1.5% on entire bill if customer's electricity is metered at primary potential<br>\$0.25 per kW if customer supplies transformation from a primary to a secondary potential.<br>If a customer is entitled to both discounts the 1.5% discount is applied first. |
| § Minimum Charge  | 50% of the highest maximum demand charge billed in any month within an on-peak period (1 November to 31 March inclusive) during the preceding 11 months.   |
| § Rate Rider  | 5% Rate Rider applied to all charges, before taxes and levies.   |
| <b>Medium General Service Interim Rate</b>  |  |
| <i>Annual peak demand between 35 and 150 kW. MGS accounts are moving from the MGS Interim Rate to the new MGS Conservation Rate which better encourages conservation.</i> |  |
| § Basic Charge  | \$0.1925 per day   |
| § Demand Charge   | \$0.00 per kW for first 35 kW<br>\$4.69 per kW for next 115 kW<br>\$9.00 per kW for remaining kW   |
| § Energy Charge   | \$0.0897 per kWh for last 14,800 kWh<br>\$0.0490 per kWh for remaining kWh   |
| § Discounts   | 1.5% on entire bill if customer's electricity is metered at primary potential<br>\$0.25 per kW if customer supplies transformation from a primary to a secondary potential<br>If a customer is entitled to both discounts the 1/5% discount is applied first   |
| § Monthly Minimum Charge  | 50% of the highest maximum demand charge billed in any month within an on-peak period (1 November to 31 March inclusive) during the preceding 11 months  |
| § Minimum Energy Charge   | \$0.0281 per kWh applies when the Energy Charge (Part 1 and 2) divided by the total kWh is less than \$0.0281 per kWh  |
| § Rate Rider  | 5% Rate Rider applied to all charges, before taxes and levies  |
| <b>Large General Service Conservation Rate</b>  |  |
| <i>Annual peak demands equal to or greater than 150 kW or total annual energy usage of at least 550,000kWh.</i>   |  |
| § Basic Charge  | \$0.1925 per day   |
| § Demand Charge   | \$0.00 per kW for first 35 kW<br>\$4.69 per kW for next 115 kW<br>\$9.00 per kW for remaining kW   |
| § Energy Charge   | Part 1:<br>\$0.0937 per kWh for first 14,800 kWh<br>\$0.0451 per kWh for remaining kWh up to baseline<br>Part 2:   |

|   |   |
|---|---|
|   | <p>\$0.0942 per kWh for usage up to 20% above baseline</p> <p>\$0.0942 per kWh for savings down to 20% below baseline (credit)</p> <p>Usage or savings beyond 20% of baseline are based on Part 1 prices</p>  |
| § Discounts                             | <p>1.5% on entire bill if customer's electricity is metered at primary potential</p> <p>\$0.25 per kW if customer supplies transformation from a primary to a secondary potential</p> <p>If a customer is entitled to both discounts the 1.5% discount is applied first</p> |
| § Monthly Minimum Charge                | 50% of the highest maximum demand charge billed in any month within an on-peak period (1 November to 31 March inclusive) during the preceding 11 months   |
| § Minimum Energy Charge                 | \$0.0281 per kWh applies when the Energy Charge (Part 1 and 2) divided by the total kWh is less than \$0.0281 per kWh   |
| § Rate Rider                            | 5% Rate Rider applied to all charges, before taxes and levies   |
| <b>Industrial: Transmission Service</b> |   |
|   | <i>Mines, chemical plants, large sawmills, pulp and paper mills, large manufacturing</i>  |
| § Demand Charge                         | \$6.263 per kVA of billing demand   |
| § Energy Charge                         | <p>\$0.03261 per kWh applied to all kWh up to and including 90% of the customers baseline load (CBL) in each billing year.</p> <p>\$0.07360 per kWh applied to all kWh above 90% of the CBL in each billing year.</p>   |
| § Minimum Charge                        | \$6.027 per KVa of billing demand per billing period  |
| § Rate Rider                            | 5% Rate Rider applied to all charges, before taxes and levies.  |

Data Source: BC Hydro "Rates" – [www.bchydro.com](http://www.bchydro.com)

## NATURAL GAS

|                                   |  |
|-----------------------------------|--|
| Pacific Northern Gas              | <a href="http://www.png.ca">www.png.ca</a> |
| Rate Territory                    | Vanderhoof-Prince Rupert/Kitimat Area      |
| <b>Firm Contract Rates (2006)</b> |  |
| Type of Customer                  | Small Industrial (RS 5)                    |
| Basic Charge (Monthly)            | \$2,973.07 (CDN)                           |
| Administration Fee (Monthly)      | -  |
| Demand Charge                     | \$0.00 (CDN)                               |
| Delivery & Gas Charge             | \$8.46 (CDN)                               |

Data Source: Invest BC Community Profile - Smithers Area - "Utilities"  
<http://investbc.gov.bc.ca/CommunityProfiles/Pages/CommunityInfo.aspx?page=utilities&pCommunityID=509>

## TELECOMMUNICATIONS

|   |                                      |
|---|--------------------------------------|
| <b>Name of Provider</b>                         | <b>Telus</b>                         |
| <b>Address</b>                                  | #5-3777 Kingsway Burnaby, BC V5H 3Z7 |
| <b>Website</b>                                  | www.telus.net                        |
| <b>Contact#</b>                                 |                                      |
| § Residential                                   | 250-310-2255                         |
| § Business                                      | 250-310-3100                         |
| <b>Service Characteristics of The Office:</b>   |                                      |
| § Switch Technology                             | Digital                              |
| § Fiber Service provided                        | Yes                                  |
| § 100 Mbps LAN Service Available                | Yes                                  |
| § Monitoring- Remotely or On-Site               | Remotely                             |
| § ISDN Available                                | Yes                                  |
| § ADSL Available                                | Yes                                  |
| § ADSL Available From Switch                    | Yes                                  |
| § Central Office on Self-Healing Fiber Ring     | No                                   |
| § Dual Feed from Two Separate Switching Offices | No                                   |
| § Multiple Route Diversity                      | Yes                                  |

*Data Source: Northern Development Research – [www.northerndevelopment.bc.ca](http://www.northerndevelopment.bc.ca)*

### Rogers Cellular Service

- § Rogers Wireless announced in September 2007 that it would invest \$10 million in Northern British Columbia to expand its world-standard GSM (Global System for Mobile communications) wireless voice and data network. This network expansion has extended Rogers Wireless service to Terrace BC in support of this fast growing commercial, shipping and tourist corridor.

Customer support services in the Town of Smithers are provided by Loudring Smithers and BC Web, which are located at 3855 2<sup>nd</sup> Avenue, Smithers, BC, V0J 2N0, Phone: 250-877-7777.

## 8. BUSINESS SUPPORT SERVICES

---

### Business Support Services

|                                   |   |
|-----------------------------------|---|
| Machine Shop (Tool & Die)         | 7 |
| Welding                           | 3 |
| Office Equipment Service & Repair | 6 |
| Temporary Employment Services     | 0 |

---

### International Support Services

|                                |   |
|--------------------------------|---|
| Import/Export Brokers          | 1 |
| International Courier Services | 6 |
| Freight Forwarders             | 4 |

---

*Data Source: Invest BC Community Profile - Smithers Area - "Business Support Services"*  
<http://investbc.gov.bc.ca/CommunityProfiles/Pages/CommunityInfo.aspx?page=businesssupport&pCommunityID=509>



9. GOVERNMENT

MUNICIPAL GOVERNMENT

Township of Smithers

|                              |                 |
|------------------------------|-----------------|
| Form (Structure)             | Mayor & Council |
| Number of Elected Officials  | 7               |
| Mayor                        | Taylor Bachrach |
| Chief Administrative Officer | Deborah Sargent |

REGIONAL DISTRICT

Regional District of Bulkley-Nechako

|                             |               |
|-----------------------------|---------------|
| Form (Structure)            | Chair & Board |
| Number of Elected Officials | 15            |
| Chair                       | Bill Miller   |



## PROVINCIAL

---

### Government of British Columbia

|                                    |  |
|------------------------------------|--|
| Form (Structure)                   | British Parliamentary                  |
| Number of Elected Officials        | 85                                     |
| How Often Does Legislature Convene | 2012-May 16-19, 24-26, 30,31, June 1,2 |

### PREMIER

---

|                                 |                                |
|---------------------------------|--------------------------------|
| Name                            | Christy Clark                  |
| Affiliation                     | British Columbia Liberal Party |
| Year Elected                    | May 2011                       |
| Current Term Expiration         | 2 Years                        |
| Allowed to Run for Another Term | Yes                            |
| Next Election Date              | Tuesday, May 14, 2013          |

---

## PROVINCIAL GOVERNMENT REPRESENTATION

---

|  |                            |
|--|----------------------------|
| Name of Member of Legislative Assembly (MLA) | Doug Donaldson             |
| Total Members of Legislative Assembly        | 1                          |
| Electoral District                           | Bulkley Valley-Stikine     |
| Year Elected                                 | 2009                       |
| Party Affiliation                            | New Democratic Party of BC |

---

## FEDERAL GOVERNMENT REPRESENTATION

---

|                                   |                       |
|-----------------------------------|-----------------------|
| Name of Member of Parliament (MP) | Nathan Cullen         |
| Electoral District                | Skeena-Bulkley Valley |
| Year Elected                      | 2011                  |
| Party Affiliation                 | New Democratic Party  |

---

### SENATORS

---

|                            |  |
|----------------------------|--|
| No. of Appointed Officials | In Canada there are ordinarily 105 Senators appointed by the Governor General on the advice of the Prime Minister. |
|----------------------------|--|

---

## 10. HOUSING

### HOUSING CHARACTERISTICS

| Dwelling Type   | Number |
|---|--------|
| Single-detached houses                                | 1,379  |
| Semi-detached houses                                  | 100    |
| Apartments, duplex                                    | 61     |
| Other dwellings                                       | 175    |
| Number of owned dwellings                             | 1,420  |
| Number of rented dwellings                            | 711    |
| Number of dwellings constructed before 1986           | 1,455  |
| Number of dwellings constructed between 1986 and 2006 | 671    |
| Total # of Private Dwellings                          | 2,126  |

Data source: Stats Canada - 2006 Community Profile "Smithers Agglomeration" - [http://www12.statcan.ca/census-recensement/2006/dp-pd/prof/92-591/details/page.cfm?Lang=E&Geo1=CMA&Code1=965\\_&Geo2=PR&Code2=59&Data=Count&SearchText=Terrace&SearchType=Begin&SearchPR=01&B1=All&Custom=](http://www12.statcan.ca/census-recensement/2006/dp-pd/prof/92-591/details/page.cfm?Lang=E&Geo1=CMA&Code1=965_&Geo2=PR&Code2=59&Data=Count&SearchText=Terrace&SearchType=Begin&SearchPR=01&B1=All&Custom=)

### AVERAGE HOUSING VALUES

| Municipality | Single Family Homes | Multi-Family Homes | Total Property Tax & Charges |
|--------------|---------------------|--------------------|------------------------------|
| Smithers     | \$188,588           | \$130,822          | \$2,400                      |

Data Source: Invest BC Community Profile - Smithers Area "Housing"  
<http://investbc.gov.bc.ca/CommunityProfiles/Pages/CommunityInfo.aspx?page=housing&pCommunityID=509>



## 11. TAXATION

### CORPORATE INCOME TAX

|  | Small Business  | Manufacturing   | Non-Manufacturing |
|--|-----------------|-----------------|-------------------|
| <b>Federal</b>   |                 |                 |                   |
| § Rate   | 11%             | 19.5%           | 19.5%             |
| § Formula (Sales, Property & Payroll)                    | n/a             | n/a             | n/a               |
| § Accelerated Depreciated Permitted                      | Yes             | Yes             | Yes               |
| <b>Provincial</b>  |                 |                 |                   |
| § Rate   | 3.5%            | 11.0%           | 11.0%             |
| § Formula (Sales, Property & Payroll)                    | Sales & Payroll | Sales & Payroll | Sales & Payroll   |
| § Accelerated Depreciated Permitted                      | No              | No              | No                |
| <b>Local</b>   |                 |                 |                   |
| <i>British Columbia has no local taxes</i>               |                 |                 |                   |
| <b>Total Federal and Provincial Corporate Income Tax</b> | <b>14.5%</b>    | <b>30.5%</b>    | <b>30.5%</b>      |

### PERSONAL INCOME TAX

|                                  | Federal      | Provincial   | Local |
|----------------------------------|--------------|--------------|-------|
| Earned Income                    | 15 – 29%     | 5.06 – 14.7% | 0%    |
| Unearned Income (e.g. Dividends) | 0 – 14.55%   | 0 – 3.92%    | 0%    |
| Capital Gains                    | 7.5 – 14.5 % | 2.58 – 7.35% | 0%    |

### SALES / USE TAX

|  | Rate | Notes   |
|--|------|---|
| Harmonized Sales Tax                     | 12%  | HST on business inputs is fully recoverable                                     |
| Local                                    | 0%   | BC has no local sales tax   |
| Total (Effective Combined Rate) Business | 12%  | Net of HST 0% for production machinery and equipment for eligible manufacturers |



## SALES TAX RATE BY UTILITY

|                          | Yes/No | Rate | Notes  |
|--------------------------|--------|------|--|
| Electric Power           | Yes    | 12%  | HST is fully recoverable   |
| Natural Gas              | Yes    | 12%  | HST is fully recoverable   |
| Fuel Oil                 | Yes    | 5%   | 12% less point of sale rebate of 7%, fully recoverable to a registrant |
| Water                    | No     | 0%   | -  |
| Sewer                    | No     | 0%   | -  |
| Hazardous Waste Disposal | Yes    | 12%  | HST is fully recoverable   |

## TELEPHONE SUBJECT TO SALES/USE TAX

|               | Yes/No | Rate | Notes                    |
|---------------|--------|------|--------------------------|
| Local         | Yes    | 12%  | HST is fully recoverable |
| Long Distance | Yes    | 12%  | HST is fully recoverable |

## MACHINERY AND EQUIPMENT SUBJECT TO SALES/USE TAX

|                             | Yes/No | Rate | Notes                    |
|-----------------------------|--------|------|--------------------------|
| Production                  | No     | 0%   | -                        |
| Non-Production              | Yes    | 12%  | HST is fully recoverable |
| Pollution Control           | Yes    | 12%  | HST is fully recoverable |
| Office Equipment & Fixtures | Yes    | 12%  | HST is fully recoverable |

## SALES/USE TAX ON TANGIBLE PROPERTY

|  | Yes/No | Rate | Notes                    |
|--|--------|------|--------------------------|
| Office Building Construction Materials     | Yes    | 12%  | HST is fully recoverable |
| Industrial Building Construction Materials | Yes    | 12%  | HST is fully recoverable |
| Manufactures Raw Materials                 | No     | 0%   | -                        |
| Standard Software                          | Yes    | 12%  | HST is fully recoverable |
| Custom Software                            | Yes    | 12%  | HST is fully recoverable |

## PROPERTY TAX

| Levy                   | Residential      | Utility           | Major Industry    | Light Industry    | Business         | Recreational      |
|------------------------|------------------|-------------------|-------------------|-------------------|------------------|-------------------|
| General Municipal      | 3.137183         | 28.621695         | 38.610221         | 15.637281         | 11.448678        | 3.259903          |
| Municipal Road Capital | 0.186409         | 1.700656          | 2.294193          | 0.929156          | 0.680272         | 0.193699          |
| RCMP Municipal         | 1.338505         | 12.211497         | 16.473370         | 16.473370         | 4.884670         | 1.390870          |
| Regional District      | 1.390261         | 4.865914          | 4.726887          | 4.726887          | 3.406139         | 1.390261          |
| Hospital               | 0.709120         | 2.481920          | 2.411008          | 2.411008          | 1.737344         | 0.709120          |
| MFA                    | 0.00020          | 0.00007           | 0.0007            | 0.0007            | 0.0005           | 0.0002            |
| BCAA                   | 0.05990          | 0.5113            | 0.1987            | 0.1843            | 0.1843           | 0.0599            |
| School                 | 3.0989           | 14.2000           | 6.4000            | 6.4000            | 6.4000           | 3.4000            |
| <b>TOTAL</b>           | <b>9.9204780</b> | <b>64.5936820</b> | <b>71.4276790</b> | <b>36.9611020</b> | <b>28.741903</b> | <b>10.4039530</b> |

*Property Tax rates effective 2012, Property Tax rates per \$1000 Assessed Personal Property (M&E, Inventory, Other) Municipal Note: BC does not have Personal Property Taxes.*

*Data Source: Town of Smithers – [www.smithers.ca](http://www.smithers.ca)*



## 12. INTERNATIONAL RESOURCES

### INVESTMENT AND BUSINESS SUPPORT OFFICES

---

#### Smithers Chamber of Commerce

|              |  |
|--------------|--|
| Address      | 1411 Court Street, PO Box 2379, Smithers, BC V0J 2N0                   |
| Phone Number | 250- 847-5072  |
| E-Mail       | <a href="mailto:info@smitherschamber.com">info@smitherschamber.com</a> |

---

#### Community Futures Nadina

|              |   |
|--------------|---|
| Address      | 2430 Butler Avenue, PO Box 236, Houston, BC V0J 1Z0   |
| Phone Number | 250-845-2522  |
| Webpage      | <a href="http://cfnadina.ca/">http://cfnadina.ca/</a> |

---

#### Ministry of Jobs, Tourism, and Skills Training – Regional Economic Operations

|              |  |
|--------------|--|
| Contact Name | Rick Braam, Regional Project Manager                           |
| Address      | Bag 5000, Smithers, BC V0J 2N0                                 |
| Phone Number | 250-847-7797   |
| E-Mail       | <a href="mailto:rick.braam@gov.bc.ca">rick.braam@gov.bc.ca</a> |

---

#### Northern Development Initiative Trust

|              |  |
|--------------|--|
| Contact Name | Dean McKinley, Director, Economic Development                                      |
| Address      | 301 – 1268 Fifth Avenue, Prince George, BC V2L 3L2                                 |
| Phone Number | 250-561-2525   |
| E-Mail       | <a href="mailto:dean@northerndevelopment.bc.ca">dean@northerndevelopment.bc.ca</a> |

---

#### Ministry of Jobs, Tourism and Skills Training – International Investment and Company Attraction

|              |  |
|--------------|--|
| Contact Name | Michael Track, A/Executive Director – Investor Services              |
| Address      | 999 Canada Place, Suite 730, Vancouver BC V6C 3E1                    |
| Phone Number | Tel: 604-775-2202  |
| E-Mail       | <a href="mailto:michael.track@gov.bc.ca">michael.track@gov.bc.ca</a> |

---

*Data Source: Northern Development Research – [www.northerndevelopment.bc.ca](http://www.northerndevelopment.bc.ca)*

## FINANCIAL INSTITUTIONS

| Name of Company             | Address   | Phone Number  | Website  |
|-----------------------------|---|---------------|--|
| Investors Group             | 3860 Alfred Avenue<br>Smithers, BC, V0J 2N0                     | 250- 847-9620 | <a href="http://www.investorsgroup.com">www.investorsgroup.com</a> |
| Bulkley Valley Credit Union | 3894 1st Avenue<br>Smithers, BC, V0J 2N0                        | 250- 847-3255 | <a href="http://www.bvcu.com">www.bvcu.com</a>                     |
| Pyper & Tuomi Financial     | 2013 Dominion Street, Box<br>3631, Smithers, BC, V0J 2N2        | 250- 847-9119 |  |
| Royal Bank of Canada        | 1106 Main Street, Box 580,<br>Smithers, BC, V0J 2N0             | 250- 847 4405 | <a href="http://www.rbcroyalbank.com">www.rbcroyalbank.com</a>     |
| Scotia Bank                 | 3664 Highway 16 East, Box<br>2589, Smithers, BC, V0J 2N0        | 250- 877-4000 | <a href="http://www.scotiabank.com">www.scotiabank.com</a>         |
| CIBC                        | 3836 4 <sup>th</sup> Avenue, Box 1059,<br>Smithers, BC, V0J 2N0 | 250- 877-5061 | <a href="http://www.cibc.com">www.cibc.com</a>                     |
| Complete Mortgage Services  | 3568 Highway 16 East, Box<br>3662, Smithers, BC, V0J 2N0        | 250- 877-0005 | <a href="http://www.cfsgroup.ca">www.cfsgroup.ca</a>               |

## EMPLOYMENT ASSISTANCE

| Name of Company                    | Address                                  | Phone Number  | Website  |
|------------------------------------|--|---------------|--|
| North West Community College       | 3966 2nd Avenue<br>Smithers, BC V0J 2N0  | 250- 847-4461 | <a href="http://www.nwcc.bc.ca">www.nwcc.bc.ca</a>                   |
| Work BC Employment Services Centre | 1330 Main Street<br>Smithers, BC V0J 2N0 | 250- 847-0182 | <a href="http://www.workbc-smithers.com">www.workbc-smithers.com</a> |



## AIR TRANSPORTATION SERVICE

|                                      |                           |
|--------------------------------------|---------------------------|
| <b>Largest International Airport</b> | <b>Vancouver</b>          |
| <b>Distance to Airport</b>           | 1,165 Km                  |
| <b>Customs Point of Entry</b>        | No                        |
| <b>Foreign Trade Zone</b>            | No                        |
| <b>Full Instrumentation</b>          | No                        |
| <b>No. of Runways</b>                | 3                         |
| <b>Runway Length</b>                 | 3,018 m; 3,597 m; 2,225 m |
| <b>Carriers</b>                      |                           |
| § Passenger                          | 51                        |
| § Cargo                              | 18                        |
| § Charter                            | 7                         |
| <b>Weekly Non-Stop Flights</b>       | 63                        |

|                                      |  |
|--------------------------------------|--|
| <b>Closest International Airport</b> | <b>Prince George</b>                           |
| <b>Distance to Airport</b>           | 370 km   |
| <b>Customs Point of Entry</b>        | Yes  |
| <b>Foreign Trade Zone</b>            | No   |
| <b>Full Instrumentation</b>          | Yes  |
| <b>No. of Runways</b>                | 3  |
| <b>Runway Length</b>                 | 2,255 m; 1,714 m; 1,352 m                      |
| <b>Carriers</b>                      |  |
| § Passenger                          | Air Canada Jazz, Central Mountain Air, WestJet |
| § Cargo                              | Air Canada, WestJet, Puralator, DHL            |
| § Charter                            | Northern Thunderbird Air, Berry Air            |
| <b>Weekly Non-Stop Flights</b>       | 161  |

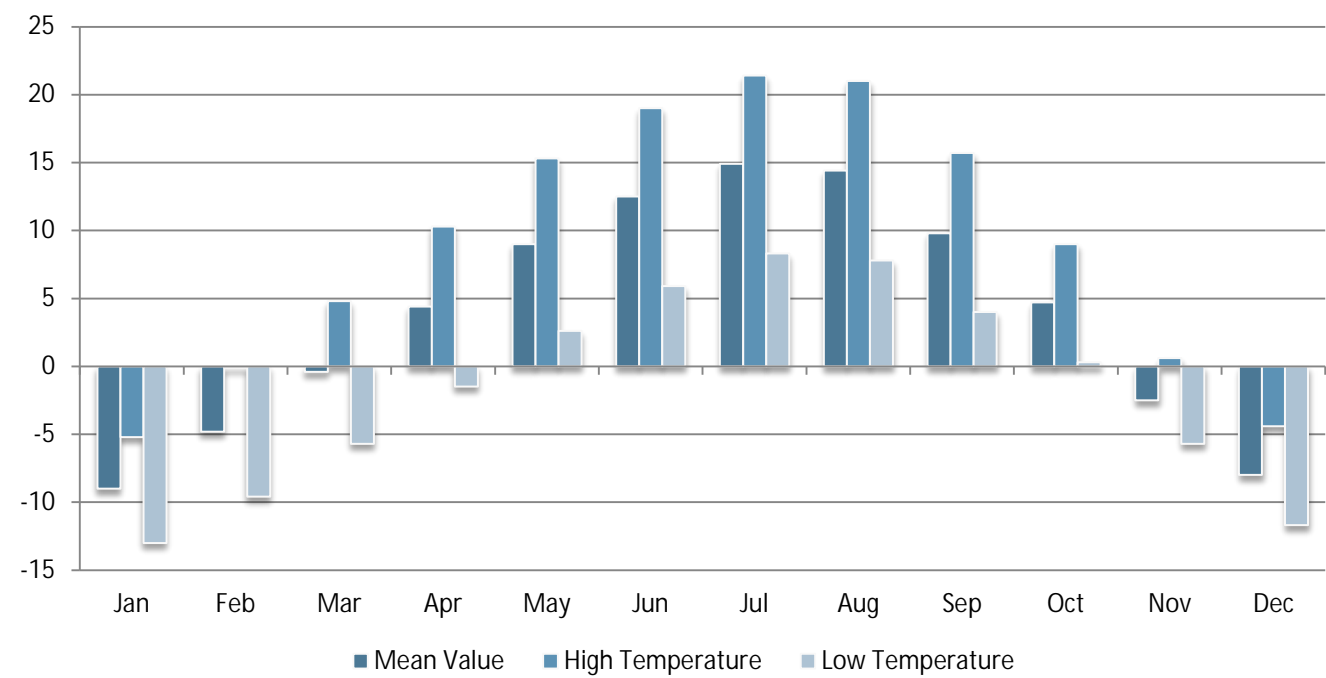
# 13. QUALITY OF LIFE

## CLIMATE

Location: Smithers, BC, Canada  
Latitude: 54° 49.200' N  
Longitude: 127° 10.800' W



### AVERAGE TEMPERATURE IN DEGREES CELSIUS BY MONTH



Data Source: Environment Canada - "National Climate Data And information Archive" - [http://www.climate.weatheroffice.ec.gc.ca/climateData/canada\\_e.html](http://www.climate.weatheroffice.ec.gc.ca/climateData/canada_e.html)  
\*Table displays data averages over a 30 year period from 1980-2010

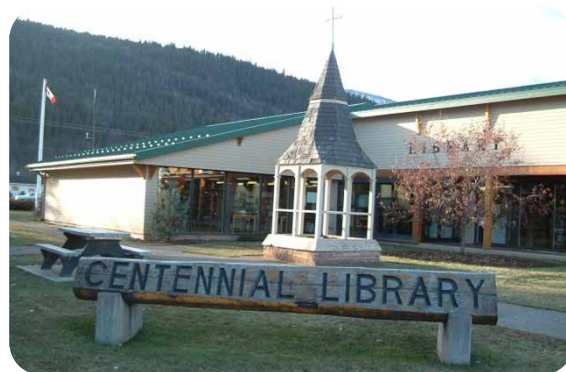
## CULTURE

### TOP ANNUAL EVENTS

| Top Events                             | Date(s)     |
|--|-------------|
| Bulkley Valley Fall Fair               | Late August |
| Charity Golf Tournament                | June        |
| Main Street Fair                       | June        |
| Mid Summer Music Festival              | June        |
| Smithers Trade Expo                    | April       |
| Men's Northern Open Golf Tournament    | September   |
| Spirit of the Mountain Winter Festival | February    |
| Christmas in the Valley                | December    |

### CULTURAL PLACES AND AMENITIES

| Amenity          |   |
|------------------|---|
| Dance Companies  | 2 |
| Museums          | 2 |
| Public Libraries | 1 |
| Art Gallery      | 1 |
| Theatre Company  | 1 |



### CULTURE AND RECREATION

| Amenity                           |   |
|-----------------------------------|---|
| Number of Enclosed Shopping Malls | 2 |
| Religion                          |   |
| § Catholic Churches               | 1 |
| § Protestant Churches             | 9 |
| § Other Religious Institutions    | 3 |



## RECREATIONAL AMENITIES

| Amenity                                   | Activity              |
|---|-----------------------|
| Carnoustie Golf & Country Club            | Golf                  |
| Houston Golf & Country Club               | Golf                  |
| Kleanza Creek Provincial Park             | Camping, water sports |
| Red Bluff Provincial Park                 | Camping, water sport  |
| Riverside Recreation Centre               | Golf, RV Park         |
| Seeley Lake/Ross Lake Provincial Park     | Camping, water sports |
| Shames Mountain Ski Corp.                 | Skiing                |
| Hudson Bay Mountain Resort                | Ski Resort            |
| Smithers Golf & Country Club              | Golf                  |
| Terrace Golf & Country Club               | Golf                  |
| Tyhee Lake Provincial Park                | Camping, water sports |
| Willow Grove Golf & Country Club          | Golf                  |
| Riverside Municipal RV Park & Campground  | Camping, RV Park      |
| Hankin–Evelyn Backcountry Recreation Area | Skiing, Hiking        |



## HEALTH

### HOSPITALS & CARE FACILITIES

|                   |   |
|-------------------|---|
| <b>Hospital</b>   | <b>Bulkley Valley District Hospital</b> |
| Teaching Hospital | No                                      |
| Number of Beds    | 24                                      |
| Outpatient Clinic | No                                      |
| Contact           | 3950 8th Avenue, Smithers, BC           |

|                   |                                |
|-------------------|--------------------------------|
| <b>Facility</b>   | <b>Bulkley Lodge</b>           |
| Teaching Hospital | No                             |
| Number of Beds    | 70                             |
| Outpatient Clinic | No                             |
| Contact           | 3668 11th Avenue, Smithers, BC |

|                   |                                   |
|-------------------|-----------------------------------|
| <b>Facility</b>   | <b>Meadows Assisted Living</b>    |
| Teaching Hospital | No                                |
| Number of Beds    | 14                                |
| Outpatient Clinic | No                                |
| Contact           | 1180 Alberta Street, Smithers, BC |

### PHYSICIANS AND DENTISTS

|                         |    |
|-------------------------|----|
| <b>Health Providers</b> |    |
| Physicians              | 24 |
| Dentists                | 7  |
| Optometrists            | 3  |



**Deborah Sargent**  
Chief Administrative Officer

**Town of Smithers**  
1027 Aldous Street, P.O. Box 879, BC, Canada V0J 2N0  
Tel: 250-847-1600  
Email: [general@smithers.ca](mailto:general@smithers.ca)



Northern Development Initiative Trust  
Contact for information on financial  
incentives for manufacturing companies

[www.northerndevelopment.bc.ca](http://www.northerndevelopment.bc.ca)



**TRADE AND INVEST  
BRITISH COLUMBIA**

Invest BC  
Contact for investor site selection  
and expansion services.

[www.investbc.com](http://www.investbc.com)